

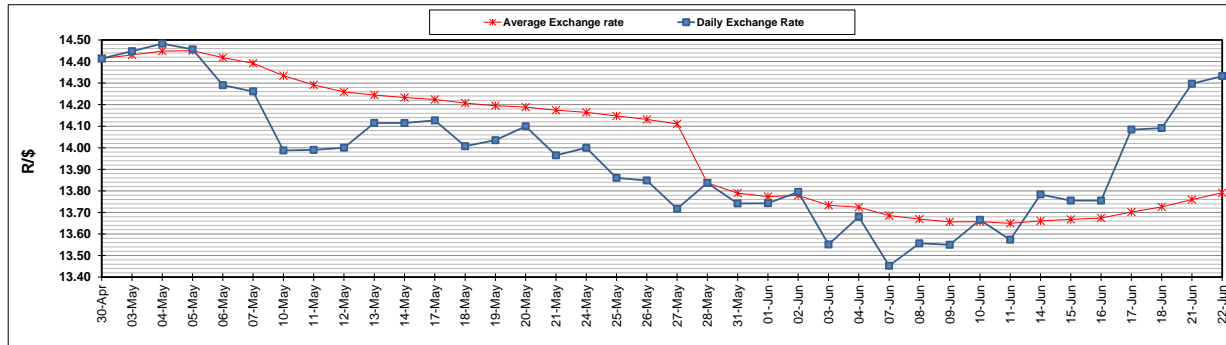
	PETROL 95 ULP	PETROL 93 ULP & LRP	DIESEL 0.05%	DIESEL 0.005%	ILL. PAR.
GAUTENG PUMP PRICE (SA c/l) AS FROM 02/06/2021	1,713.000	1,691.000	-	-	-
WHOLESALE PRICE (SA c/l) AS FROM 02/06/2021	-	-	1,466.620	1,471.020	877.488
SINGLE NATIONAL MAXIMUM RETAIL PRICE	-	-	-	-	1,102.000
BASIC FUEL PRICE - 22/06/2021 (SA c/l)	779.233	771.029	752.037	755.591	730.906
PRESS RELEASE CONTRIBUTION TO BFP 02/06/2021 - 22/06/2021 (SA c/l)	717.170	705.170	679.630	684.030	664.128
UNIT OVER/(UNDER) RECOVERY - 22/06/2021 (SA c/l)	(62.063)	(65.859)	(72.407)	(71.561)	(66.778)
AVERAGE BASIC FUEL PRICE 28/05/2021 - 22/06/2021	726.599	718.318	707.111	710.623	685.653
AVERAGE UNIT OVER/(UNDER) RECOVERY 28/05/2021 - 22/06/2021	(7.762)	(11.482)	(30.814)	(30.093)	(24.859)

ANALYSIS MOVEMENT OF AVERAGE OVER/(UNDER) RECOVERY

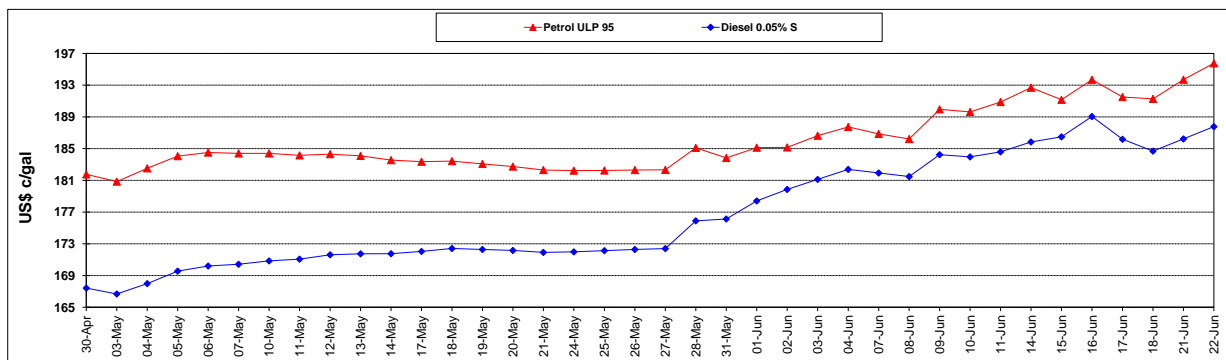
	PETROL 95	PETROL 93	DIESEL 0.05%	DIESEL 0.005%	ILL. PAR.
- MOVEMENT IN INTERNATIONAL PRODUCT PRICES	(24.605)	(28.133)	(47.206)	(46.566)	(40.752)
- MOVEMENT IN EXCHANGE RATE	16.843	16.652	16.392	16.473	15.894
AVERAGE UNIT OVER/(UNDER) RECOVERY 28/05/2021 - 22/06/2021	(7.762)	(11.482)	(30.814)	(30.093)	(24.859)

R/\$ EXCHANGE RATE - (R/\$14.3325- 22/06/2021)

EXCHANGE RATE USED IN BASIC FUEL PRICE



INTERNATIONAL PRODUCT PRICES OF BASKET USED IN BASIC FUEL PRICE



BASIC FUEL PRICE IN SA CENTS PER LITRE

